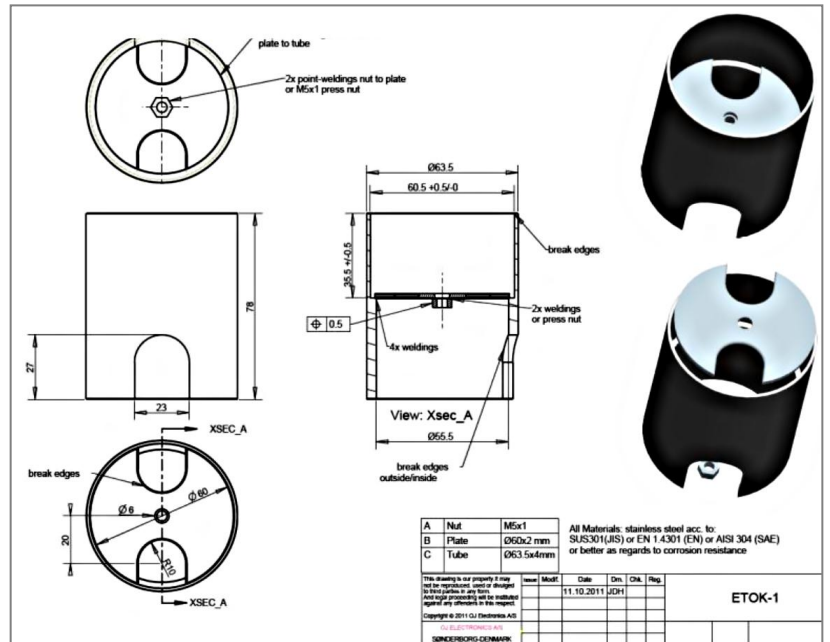


Pavement Mount Ground Sensor for Ice and Snow Melting

ETOK-1 and ETOG-56 ground sensor and kit for ice and snow melting (below).



The sensor is easily installed in the ETOK-1 cradle (cup). The power cord extends out from the bottom of the cup.

The ETOG-55 remains as the cost effective option with 33 feet (10 meters) of cable. The ETOG-56 is delivered with 82 feet (25 meters) of cable. The cable can easily be run the cable pipe when a lead/pull wire has been installed.



The sensor is delivered with a wood plug/cover to protect the hole when, for example, asphalt or concrete is being poured.