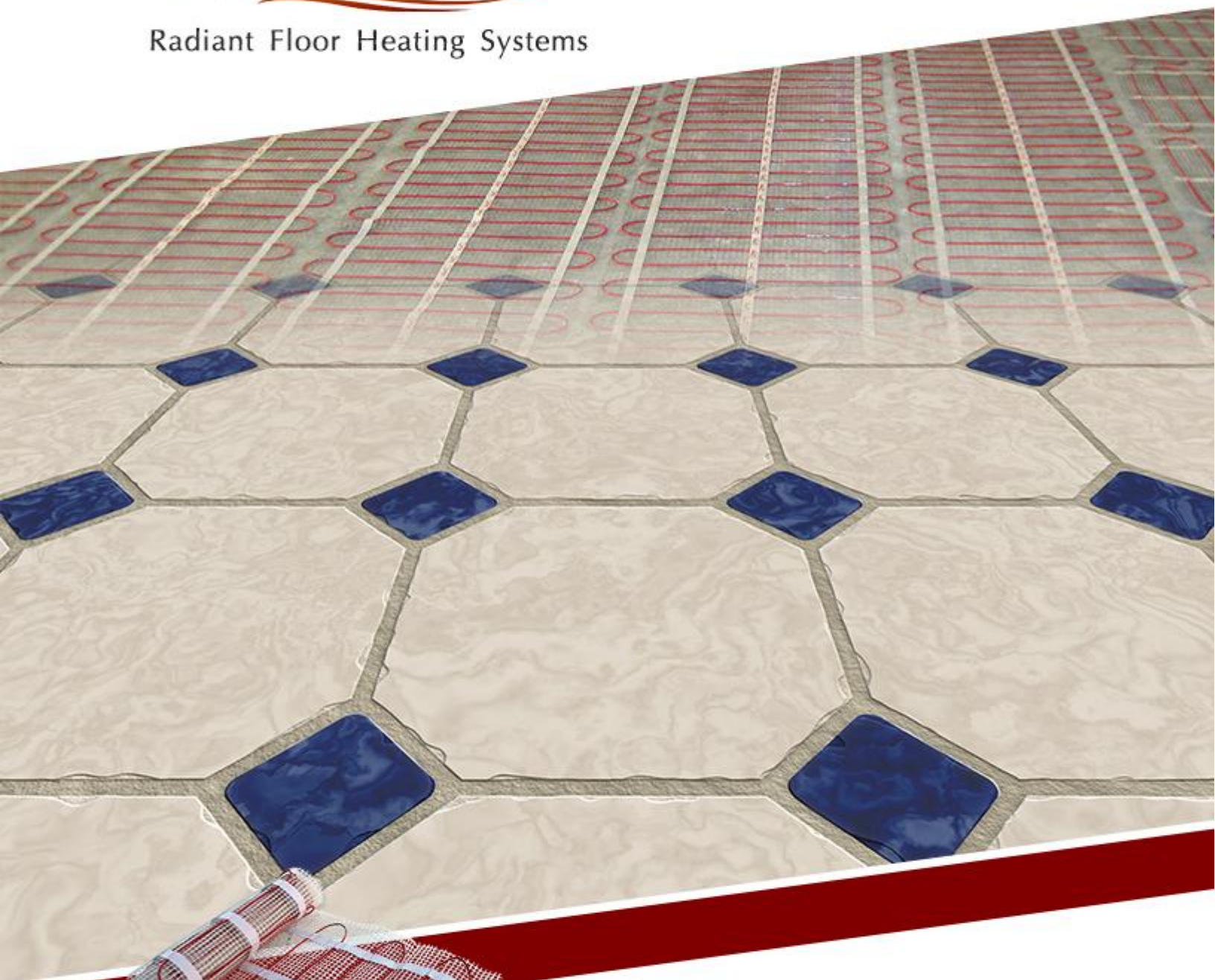


ComfortTile

Radiant Floor Heating Systems



COMFORTTILE PRODUCT SHEET

WARMZONE 
PREMIER RADIANT HEATING

ComfortTile Floor Heating Systems

Luxurious Warmth for Your Floors

The systems are easily installed under all types of floor surfaces to provide comfortable, even floor heat. ComfortTile radiant floor heating systems provide efficient room heating and reduce the transmission of dust, allergens and other airborne particulate matter associated with forced air systems.

Radiant heated floors radiate heat from the floor up, keeping you warm and comfortable from head to toe during the cold winter months. ComfortTile radiant heat systems feature a quick response time, and can heat a surface in 30 to 60 minutes. If you're looking for a way to efficiently heat your home and boost your equity, installing a ComfortTile floor heating system is an ideal solution.

ComfortTile systems come complete with a GFCI protected thermostat and strapping to secure and properly space the heating cable. All sizes and adjustments of cable spacing and coverage can be made on-site. The twin conductor heating cable is matched with premium materials, enabling the ComfortTile heat cable to provide superior floor heating performance and fast response times.



Components

Heating Element

The heating element consists of heat cable on the spool or pre-spaced and woven into an adhesive-backed fiberglass mesh, depending on your preference. The floor warming mats are pre-terminated for use with 120 and 240V, and are available in various lengths (24-inch width). While both cable systems are easy to install, the cable off the spool is particularly convenient for custom shaped floor heating projects.

Thermostat

The Warmzone ComfortTile electronic thermostats are specifically designed to control electric radiant floor heating systems for maximum comfort while minimizing power consumption. Each thermostat also includes an integrated Ground Fault Circuit Interrupter (GFCI, Class A).

ComfortTile

Floor Heating Systems

ComfortTile is available on the spool or pre-spaced with an adhesive-backed fiberglass mesh, allowing for simple roll-out installation. The floor heating system can be installed under just about any type of floor, including: ceramic tile, hardwood, laminates, carpet, etc.



For more information call:

888-488-9276

ComfortTile Floor Heating – Data Sheet

GENERAL PRODUCT INFORMATION

ComfortTile floor warming systems combine the highest comfort levels and reliability with maximum energy efficiency. It's a proven technology that's safe, reliable and energy efficient.

Features Include:

- Single point connection
- Twin conductor cable
- Safety approved for wet locations
- Flexible installation
- Durable construction
- UL listed in the U.S. and Canada
- 25-year limited warranty against manufacturing defects



ComfortTile Floor Warming System

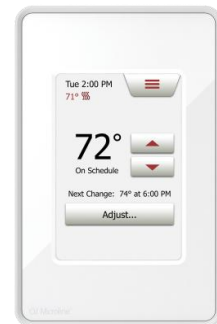
The floor warming system includes either a heating cable that is pre-spaced on an adhesive-backed fiberglass mesh that allows for simple roll-out installation or heating cable on a spool for installations in irregular shaped rooms where greater flexibility is required. The hot and cold lead junctions are uniquely designed to make them virtually foolproof.

Heating Cable Specifications

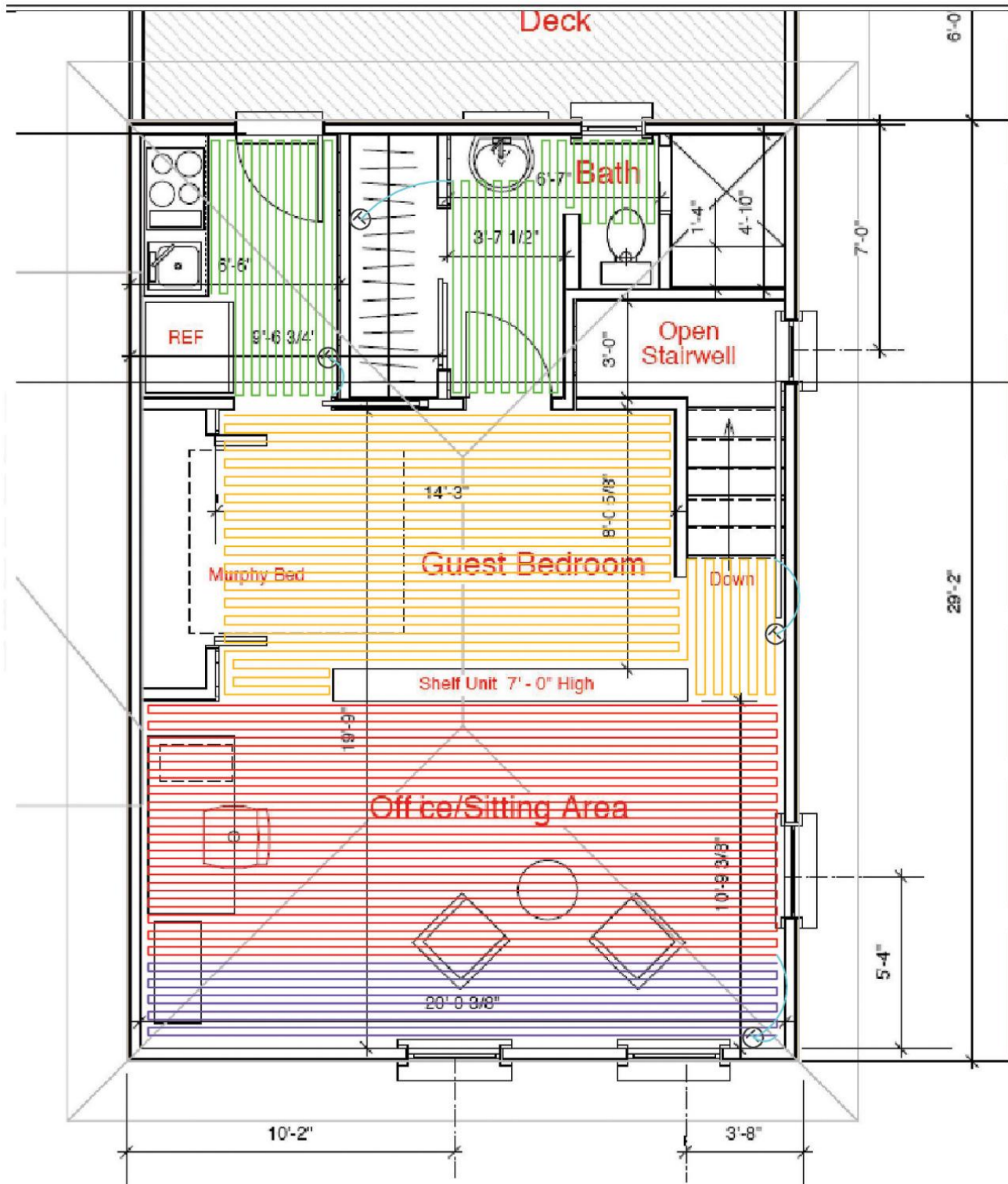
| | |
|-------------------------------|--|
| Cable Construction | Twin conductor |
| Rated Voltage | 120 V, 240 V |
| Output | 12W/ft ² (130W/m ²) ±10% (at recommended spacing) |
| Recommended Spacing | 3-inches (76.2 mm) |
| Bending Radius | 1-inch (25.4 mm) |
| Cable Diameter | 1/8 to 1/6-inch (3.2 mm-4.2 mm) |
| Conductor Insulation | Fluoropolymer |
| Outer Insulation | High Temperature PVC |
| Max. Ambient Temperature | 104°F (40°C) |
| Min. Installation Temperature | 40°F (5°C) |
| Cold lead | 2-wire 14-17 AWG plus ground braid; 10 foot (3 m) length |
| Standards | Meets all test requirements of IEC 60335, CAN/CSA – C22.2 No. 130-03, UL 1673. |
| Approvals | Certified by Intertek SEMKO against relevant IEC / EN 60335, UL and GOST Standard. |

Thermostat Specifications

| | |
|----------------------------|---|
| Functions: | 3.5-inch color screen with easy interactive touch control, easy scheduling method |
| Supply Voltage: | 120/240 VAC 50/60 Hz |
| Maximum switching current: | 15 Amp |
| Temperature control range: | 41 to 104°F (5 to 40°C) |
| Ambient range: | 32 to 104°F (0 to 40°C) |
| Floor temperature sensor: | Universal compatibility with existing floor heating sensors |



Example of a ComfortTile Floor Heating System Layout



ORDERING INFORMATION

120 Volt Cable

| Item No. 120 V cable | Length (feet) | Approximate Heat Coverage (sq. ft.) | | | Watts (3 W/ft.) | Amps | Ohms |
|----------------------------|------------------|-------------------------------------|------------------------|------------|--------------------|------|------|
| | | 2" spacing | Standard 3" spacing | 4" spacing | | | |
| TC10240 | 77.8 | 13 | 19 | 26 | 240 | 2.0 | 60.0 |
| TC10360 | 116.7 | 19 | 29 | 39 | 360 | 3.0 | 40.0 |
| TC10600 | 194.5 | 32 | 49 | 65 | 600 | 5.0 | 24.0 |
| TC10840 | 272.4 | 45 | 68 | 91 | 840 | 7.0 | 17.1 |
| TC10960 | 311.3 | 52 | 78 | 104 | 960 | 8.0 | 15.0 |
| TC11210 | 391.7 | 65 | 98 | 131 | 1210 | 10.1 | 11.9 |

240 Volt Cable

| Item No. 240 V Cable | Length (feet) | Approximate Heat Coverage (sq. ft.) | | | Watts (3 W/ft.) | Amps | Ohms |
|----------------------------|------------------|-------------------------------------|------------------------|------------|--------------------|------|-------|
| | | 2" spacing | Standard 3" spacing | 4" spacing | | | |
| TC20360 | 116.7 | 19 | 29 | 39 | 360 | 1.5 | 160.0 |
| TC20600 | 194.5 | 32 | 49 | 65 | 600 | 2.5 | 96.0 |
| TC20840 | 272.4 | 45 | 68 | 91 | 840 | 3.5 | 68.6 |
| TC21080 | 350.2 | 58 | 88 | 117 | 1080 | 4.5 | 53.3 |
| TC21440 | 466.9 | 78 | 117 | 156 | 1440 | 6.0 | 40.0 |
| TC21790 | 580.1 | 97 | 145 | 193 | 1790 | 7.5 | 32.2 |
| TC22090 | 678.4 | 113 | 170 | 226 | 2090 | 8.7 | 27.6 |
| TC22630 | 851.8 | 142 | 213 | 284 | 2630 | 11.0 | 21.9 |
| TC22840 | 922.2 | 154 | 231 | 307 | 2840 | 11.8 | 20.3 |

120 Volt Mat

| Item No. 120 V Mat | Heated Area | Mat Width (feet) | Mat Length (feet) | Watts (12 W/sq. ft.) | Amps | Ohms |
|-----------------------|----------------|---------------------|----------------------|-------------------------|------|------|
| TM1020 | 20 | 1.5 | 13.3 | 240 | 2.0 | 60.0 |
| TM1030 | 30 | 1.5 | 20.0 | 360 | 3.0 | 40.0 |
| TM1040 | 40 | 1.5 | 26.7 | 480 | 4.0 | 30.0 |

240 Volt Mat

| Item No. 240 V Mat | Heated Area | Mat Width (feet) | Mat Length (feet) | Watts (12 W/Sq. ft.) | Amps | Ohms |
|-----------------------|----------------|---------------------|----------------------|-------------------------|------|-------|
| TM2020 | 20 | 1.5 | 13.3 | 240 | 1.0 | 240.0 |
| TM2040 | 40 | 1.5 | 26.7 | 480 | 2.0 | 120.0 |
| TM2050 | 50 | 1.5 | 33.3 | 600 | 2.5 | 96.0 |
| TM2100 | 100 | 1.5 | 66.7 | 1200 | 5.0 | 48.0 |
| TM2120 | 120 | 1.5 | 80.0 | 1440 | 6.0 | 40.0 |

WARRANTY INFORMATION

ComfortTile Heating Cables and Mats: 25-year limited warranty.

Thermostat: 2-year limited warranty.

ComfortTile mats/cables are UL approved for both US and Canada.

Warmzone can accept no responsibility for possible errors in catalogs, brochures, other printed materials, and website information. Warmzone reserves the right to alter its products without notice. This also applies to products already on order provided that such alteration can be made without subsequent changes being necessary in specifications already agreed upon.

