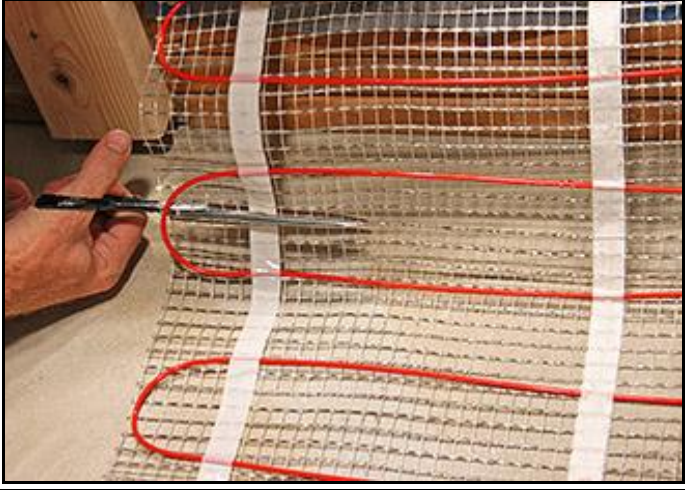
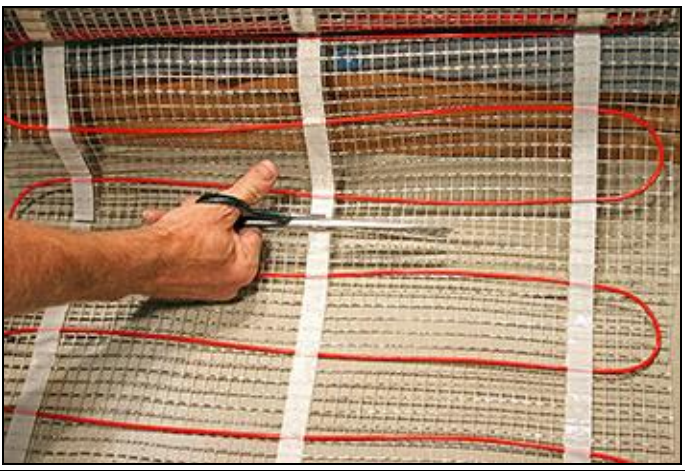

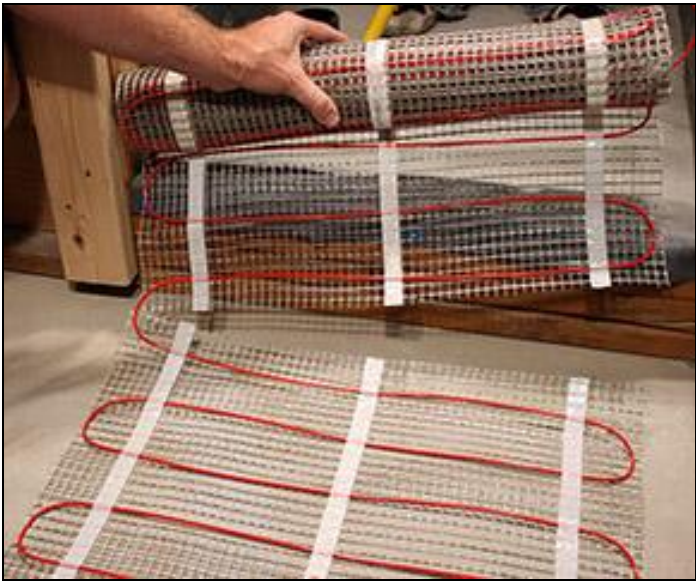
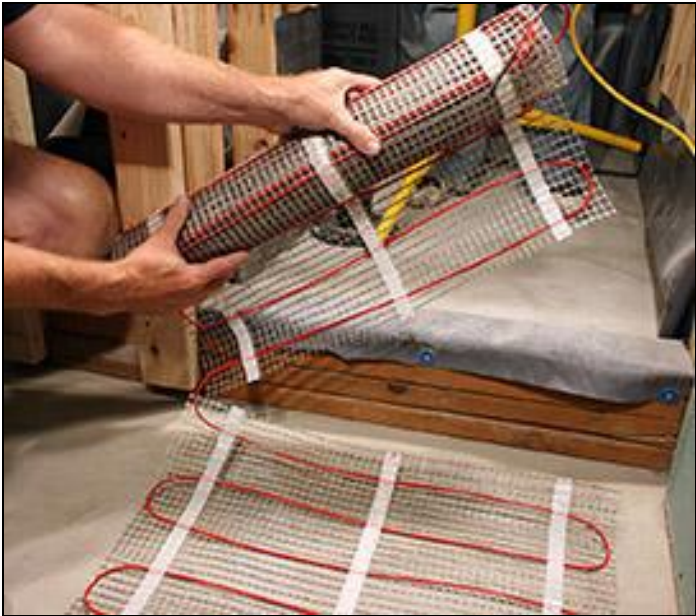


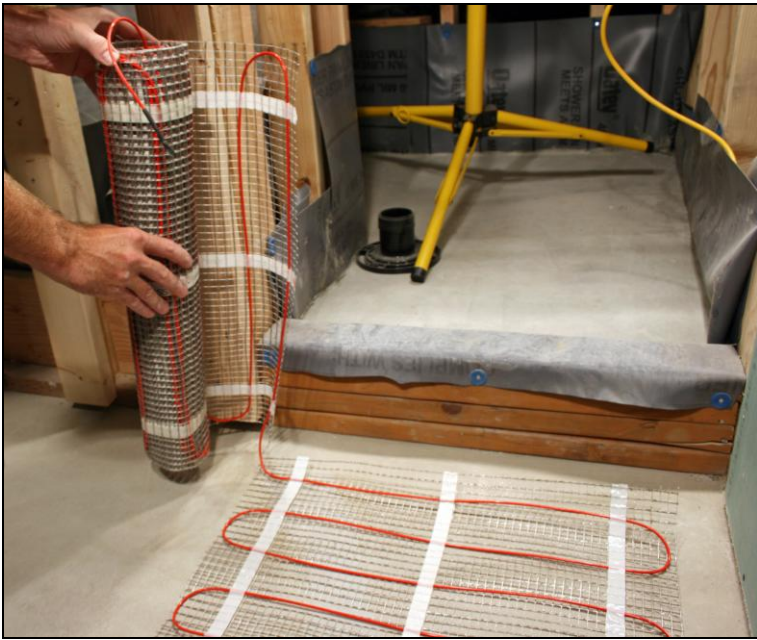
## Cutting the ComfortTile Floor Heating Mat for Turns

*Tips for Installing Radiant Floor Heating Mats*

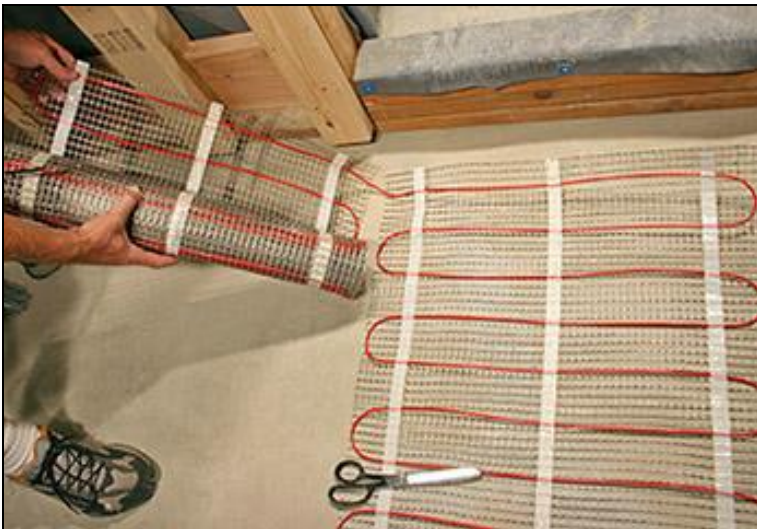
1.		Carefully cut the mesh backing.
2.		Be sure to avoid cutting or damaging the heat cable.
3.		

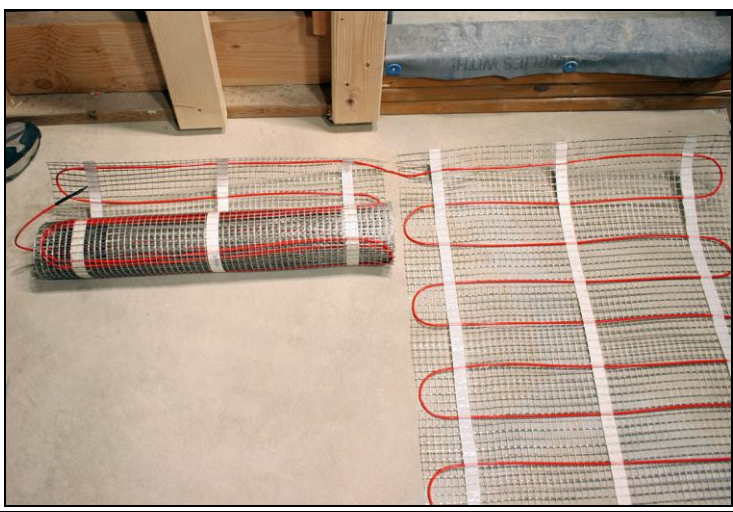
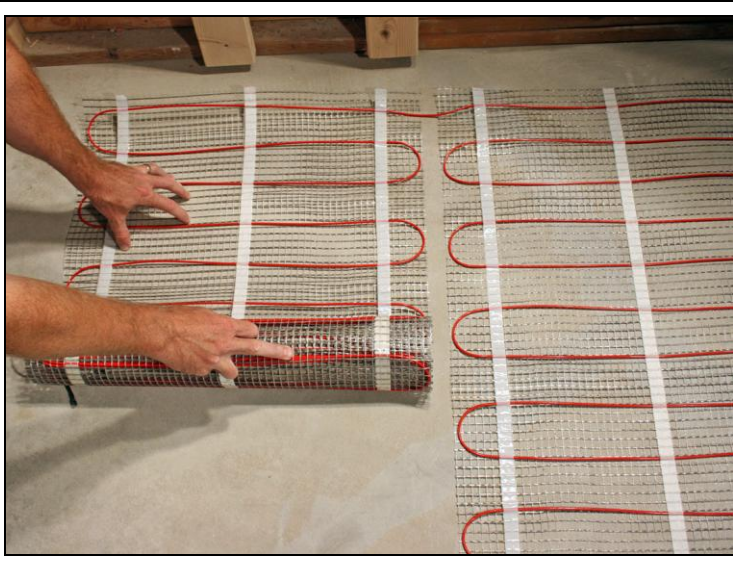
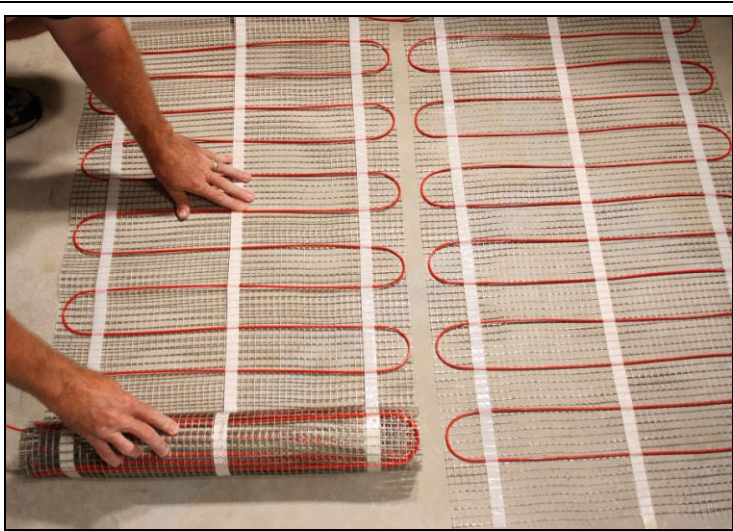
4.		<p>After cutting the mesh backing, flip the mat over to begin another row.</p>
5.		

6.



7.



<p>8.</p>		<p>Align the mat to the row that has already been laid out.</p>
<p>9.</p>		<p>Begin unrolling the mat.</p>
<p>10.</p>		<p>Continue rolling out the mat next to the previous row. Make sure the cables of one row do not touch the cables of the other row.</p>